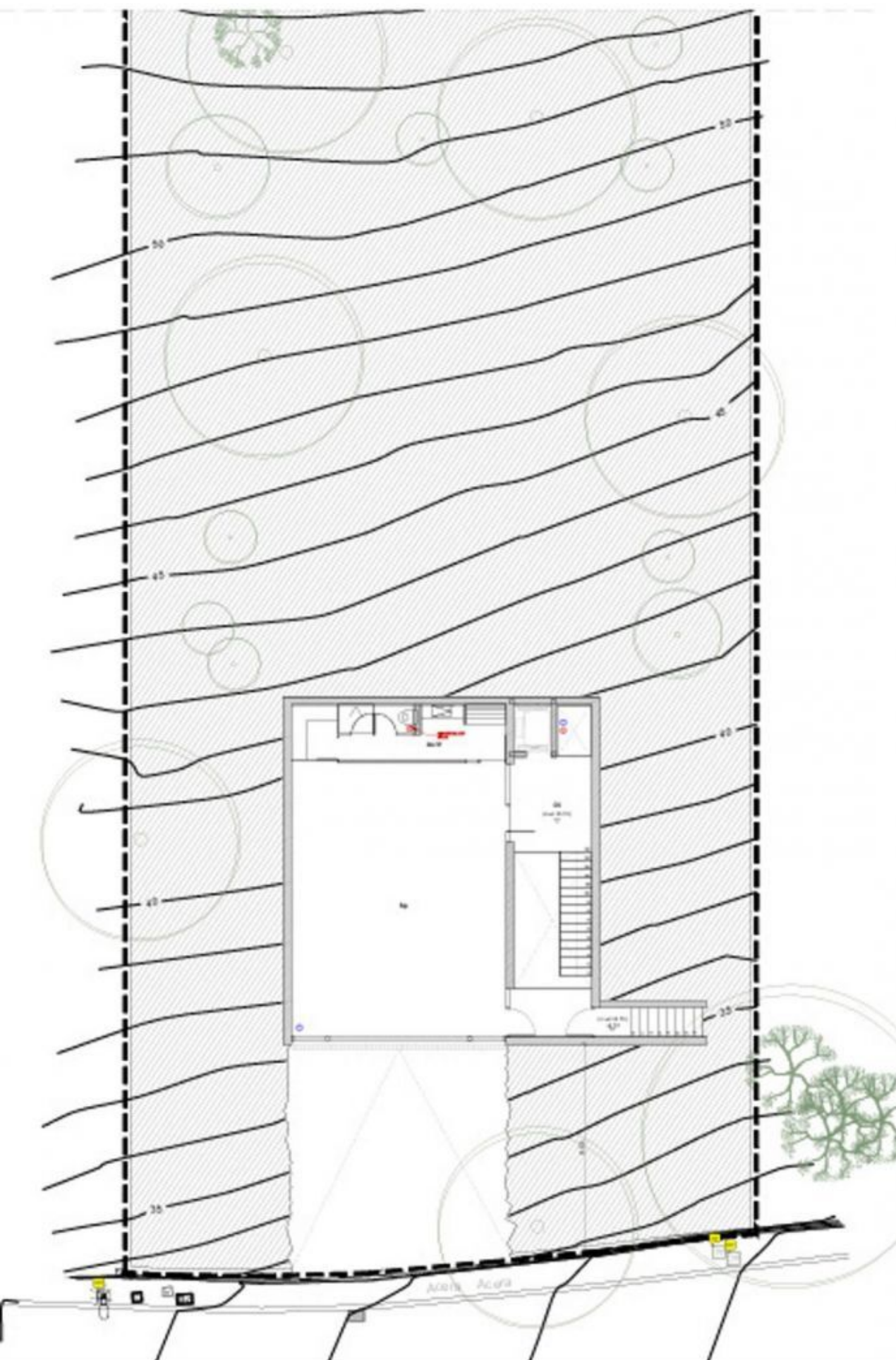




**RE/MAX**  
BETTER LIFE



## URBAN PLOT WITH PROJECT IN POLLENÇA, GOTMAR URBANIZATION

**0**

Bedrooms

**0**

Bathrooms

**0 m<sup>2</sup>**  
Built**1.006 m<sup>2</sup>**  
Total**750.000€**  
Price

© RE/MAX España, Copyright 2025. Cada oficina es de gestión y propiedad independiente.

Toda la información proporcionada por el agente se considera fiable pero no está garantizada y debe ser verificada independientemente.

## Description

In Puerto de Pollença, in one of the island's most prestigious residential areas, this 1,006 m<sup>2</sup> urban plot is offered in a truly privileged location. From its elevated position, you can enjoy spectacular views of the Tramuntana Mountains and the Bay of Pollença, an incomparable setting where the sea and mountains blend in perfect harmony.~The property includes the basic project for the construction of an elegant 370 m<sup>2</sup> home, designed with high-quality finishes and conceived to maximize natural light and panoramic views. The meticulous design features four bedrooms, a parking area, an elevator, and a spacious, bright living room. It is completed with large outdoor terraces and two private pools, enhancing the comfort and Mediterranean lifestyle.~Located in a luxurious area of ??Gotmar, surrounded by exclusive high-end villas, this plot represents a unique investment opportunity for those seeking exclusivity, privacy, and an unbeatable setting. A high-value asset in Mallorca's real estate market, it's perfect for both a private residence and a secure investment in one of the island's most coveted locations.~~~

## Details

- ✓ Ref: 26943642
- ✓ Exclusive agreement
- ✓ Light
- ✓ Energy certification: Not available
- ✓ Light
- ✓ Water